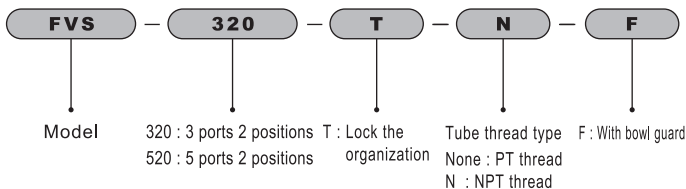
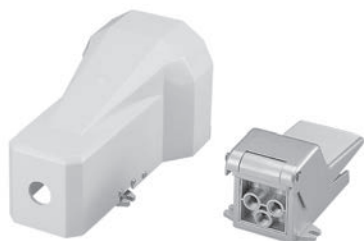


FVS SERIES FOOT VALVE

Operation specification and Order expression

CHELIC PNEUMATIC

How to order



MV
MECHANICAL
VALVE

HVL
HAND-OPERATED
VALVE

HVM
HAND-OPERATED
VALVE

HVT
MINI TYPE
HAND-OPERATED
VALVE

QE
QUICK
EXHAUST
VALVE

FVA
FOOT
VALVE

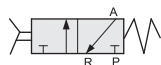
FVS
FOOT
VALVE

Specification

Item	Model	FVS - 320	FVS - 520
Connection port		PT or NPT thread	
Quantity of position		3 ports 2 positions	5 ports 2 positions
Fluid		Air	
Pressure range	kgf/cm ² (Kpa)	0~10(0~100)	
Able to bear pressure	kgf/cm ²	10	
Orifice		12 mm ²	
Range of service temperature	°C	-10~80	

External dimension

- FVS - 320 - (T)



- FVS - 520 - (T)



F : with bowl guard (optional)

