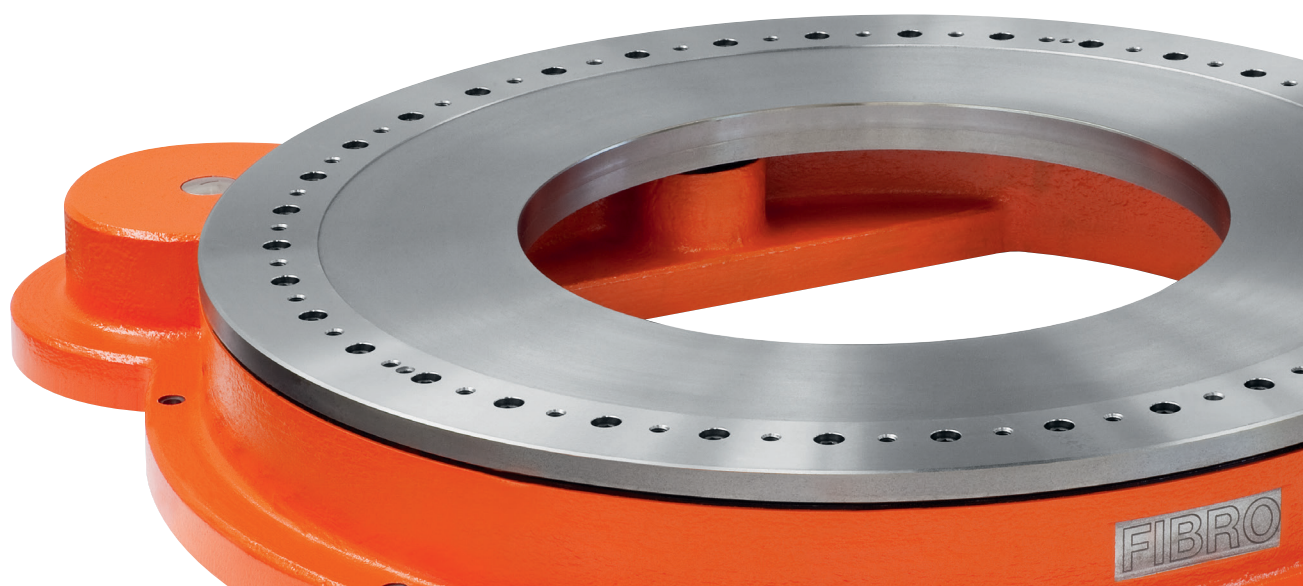
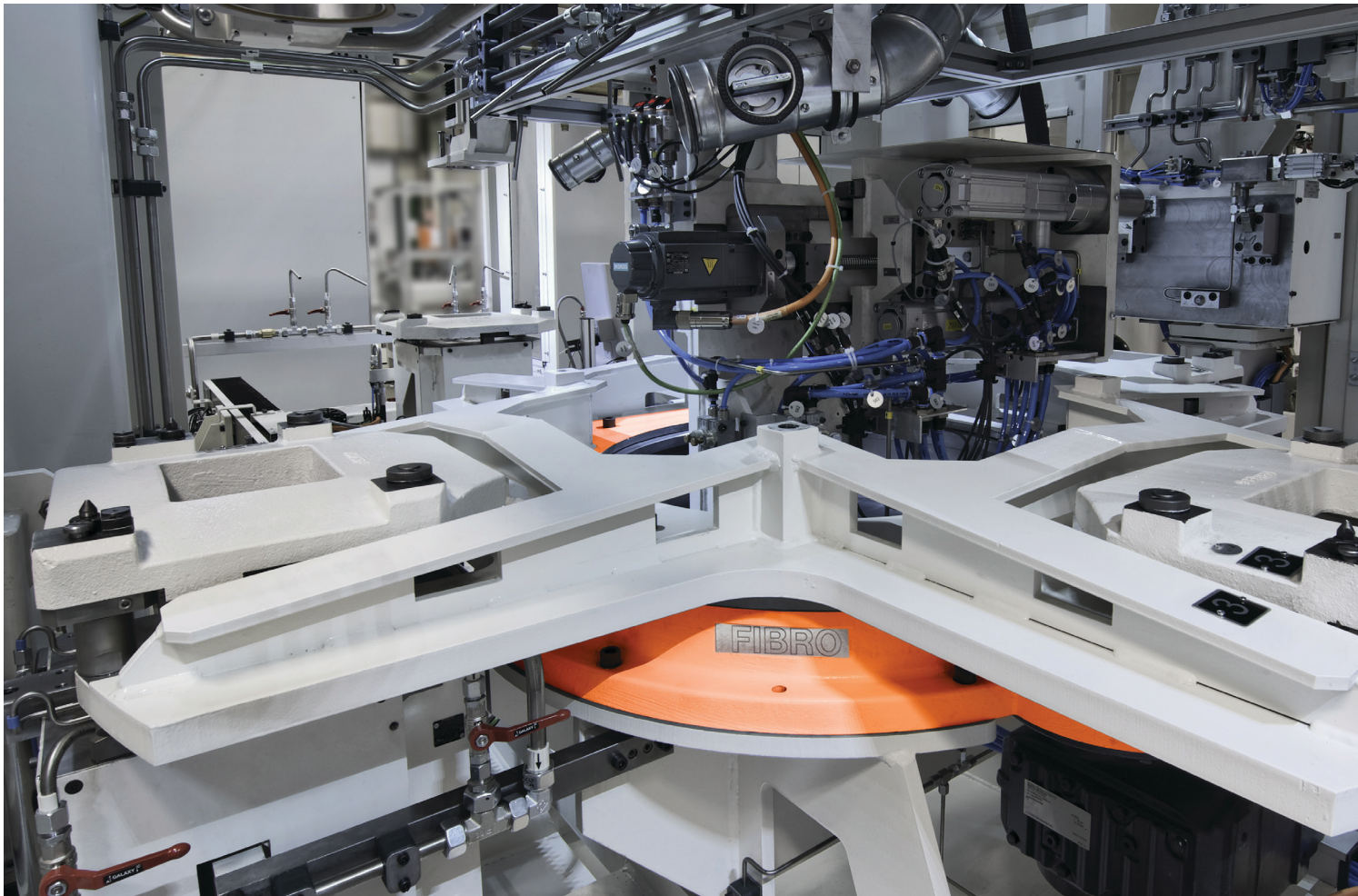


HEAVY-LOAD POSITIONING TABLES

FIBRO

MAT





FIBROMAT®

THE HEAVIEST OF LOADS ...

HEAVY-LOAD POSITIONING TABLES

A powerhouse with an extremely large centre hole and very flat design at an optimum price — the latest heavy-load positioning table from FIBRO.

When large and heavy fixtures have to be positioned dynamically and precisely, the FIBROMAT modular heavy-load positioning table is the optimum solution. It fits perfectly into automobile body-in-white, as the heart of workpiece storage or in honing centres, for example.

The maintenance-free rotary table with

lifetime lubrication is driven by reliable spur gear toothings. This prevents damage to the mechanical system of the rotary table in the event of a sudden power failure or emergency stop. Its covered seals make it one of the most economical and robust rotary tables on the market. Place your trust in FIBRO's 50 years of experience in the construction of rotary tables! Our extensive engineering expertise and our own in-house manufacturing allows us to implement your wishes individually and immediately.

FIBROMAT is available in two sizes for superstructures up to a maximum of

9,500 mm in diameter. Any position can be approached using the single drive and by using an optional indexing unit an accuracy up to ± 15 arc seconds is obtained. Extremely short emergency stopping times and a higher torque are achieved using two drives that have been clamped without play. In addition, positioning accuracies up to ± 10 arc seconds can be achieved using a direct measuring system.



FIBROMAT Rotary tables Sizes		AT.0800	AT.1000	AT.1250	AT.1600
Table top diameter	mm	800	1.000	1.250	1.600
Centre hole diameter	mm	320	520	770	1.000
Maximum superstructure diameter	mm	4.500	6.000	7.500	9.500
Maximum transport load	kg	10.000	12.000	15.000	25.000
Permitted moment of inertia J	kgm ²	8.000	16.000	35.000	100.000
Permitted axial loading on the indexing table	N	141.000	155.000	172.000	260.000
Permitted radial loading on the indexing table	N	56.000	64.000	80.000	220.000
Permitted tilting moment on the indexing table	Nm	35.000	50.000	72.000	135.000
Permitted tangential moment on the indexing table	Nm	6.500	9.400	12.900	16.300
Maximum axial runout of the table top	mm	0,05	0,05	0,07	0,10
Maximum runout of the centre borehole	mm	0,05	0,05	0,07	0,10
Weight (without drive unit)	kg	350	470	635	1.400

... DYNAMICALLY AND SAFELY POSITIONED.



FIBROMAT AT.1250

with machine stand

ADDITIONAL OPTIONS FOR FIBROMAT

- Second drive for higher positioning accuracy and higher torque
- Indexing unit for increased positioning accuracy up to $\pm 15''$ for freely selectable angles
- Direct measuring system for highest positioning accuracy up to $\pm 10''$
- Expandable centre hole of 200 mm
- Measuring tape at table top for optical position analysis
- Position detection and overrun protection
- Media distributor and slip-ring transmitter
- Machine stand and adaptations, e.g., for the exchange of existing rotary tables
- Special connecting dimensions and customer specific drilling templates for your individual use

FIBRO GMBH

Business Area Rotary Tables
Weidachstraße 41–43
74189 Weinsberg, Germany
T +49 7134 73-0
F +49 7134 73-218
info@fibro.de
www.fibro.com

A COMPANY IN THE LÄPPLE-GROUP

- **LÄPPLE AUTOMOTIVE**
- **FIBRO**
- **FIBRO LÄPPLE TECHNOLOGY**
- **LÄPPLE AUS- UND WEITERBILDUNG**

BRANCH OFFICE**FIBRO France SARL**

Département Plateaux Diviseurs
26 Avenue de l'Europe
FR-67300 Schiltigheim
T +33 390 20 40 41
F +33 388 81 08 29
info@fibro.fr

FIBRO Inc.

Business Area Rotary Tables
139 Harrison Avenue
US-Rockford, IL 61104
T +1 815 229 13 00
F +1 815 229 13 03
info@fibroinc.com

FIBRO ASIA PTE. Ltd.

9 Changi South Street 3, #07-04
Singapore 486361
T +65 65 43 99 63
F +65 65 43 99 62
info@fibro-asia.com

**FIBRO INDIA PRECISION
PRODUCTS PVT. LTD.**

Regd. Office & Works
Plot: A-55, Phase II,
Chakan MIDC, Taluka Khed
410501 Pune
T +91 2135 33 88 00
F +91 2135 33 88 88
info@fibro-india.com

**FIBRO (SHANGHAI) STANDARD
PARTS CO., LTD.**

2nd Floor, Building 30, No. 188,
He Dan Road, (Shanghai) Pilot Free
Trade Zone
200131 Shanghai
T +86 021 6083 1589
F +86 021 6083 1599
info@fibro-china.com