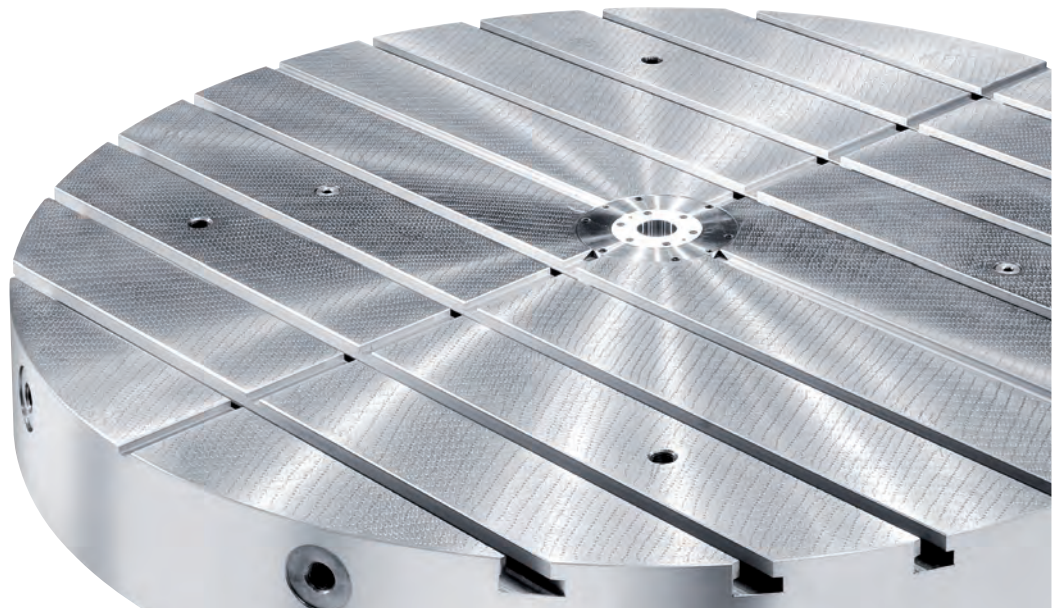


NC- ROTARY TABLES WITH TORQUE-DIRECT DRIVE

FIBRO



CDYN **DA**



FIBRODYN DA 1.08 FOR COMBINED MILLING/TURNING APPLICATIONS

Technical Data for the FIBRODYN DA 1.08:

Indexing table, round	∅ 1.000 - 2.000 mm
Table top speed	max. 400 rpm
Permissible axial loading in horizontal use	150.000 N
Permissible radial loading on the indexing table	200.000 N
Permissible tilting moment in horizontal use	60.000 Nm
Permissible transport load in horizontal use (milling)	10.000 kg
Permissible transport load in horizontal use (turning)	4.000 kg
Tangential moment with hydraulic clamping (64 bar)	26.000 Nm
Indexing accuracy (depending on control and measuring system)	± 2"
Runout centre bore, ∅ 50 H7	0,010 mm
Axial runout accuracy at ∅ 1,600 mm	0,025 mm

ADVANTAGES OF FIBRODYN ROTARY TABLES

- Torque motor provides maximum dynamics
- Extremely short positioning times, for example $t_s = 0.36$ s for 180°
- Flexible positioning in freely selectable angular steps
- Zero backlash and high performance as a result of no gearing
- Very high and very low uniform rotational speeds
- Indexing accuracy depending on control and measuring system $\pm 2''$
- Highest repeat accuracy < 0.2 arc seconds
- Outstanding axial and radial runout accuracy
- Hydraulic table top clamping for a force-fit connection between the table top and the housing
- Compact design
- Very high operational safety and long term accuracy
- Alternatively available with the same connection dimensions:
FIBROPLAN table for milling only, with worm drive

FIBRO GMBH

Business Area Rotary Tables
 Weidachstraße 41-43
 74189 Weinsberg, Germany
T +49 7134 73-0
F +49 7134 73-218
 o.de
 www o.com

Please fax +49 7134 73-218

Yes, we would like to receive more information about the FIBRODYN!

Please send information on the following subject to: _____

Company _____

Message _____

Name _____

Department _____

Street _____

Post code _____ Town _____

Phone _____ Fax _____

E-Mail _____